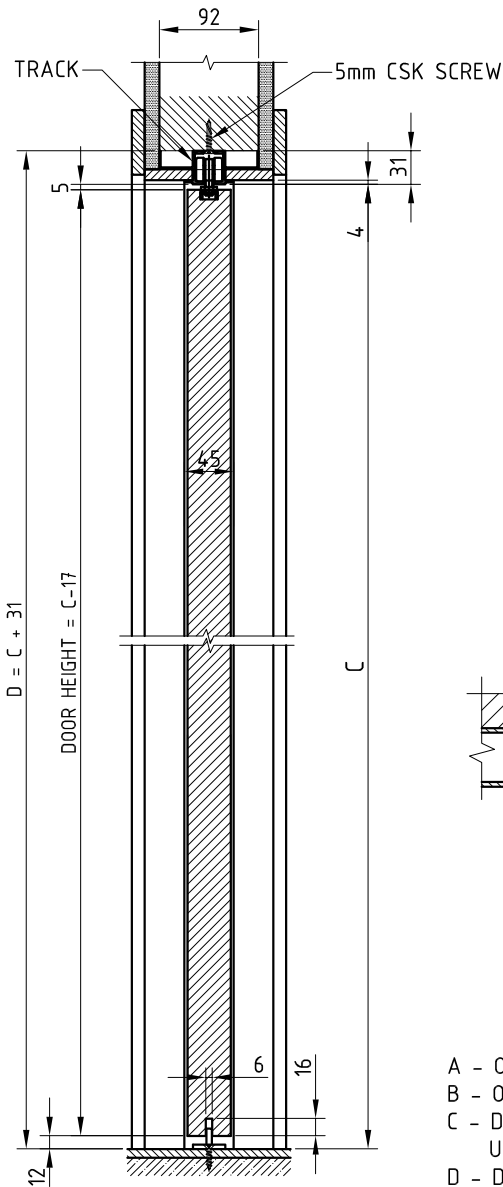
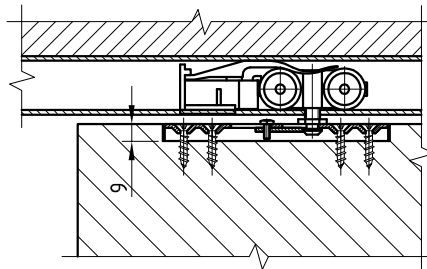
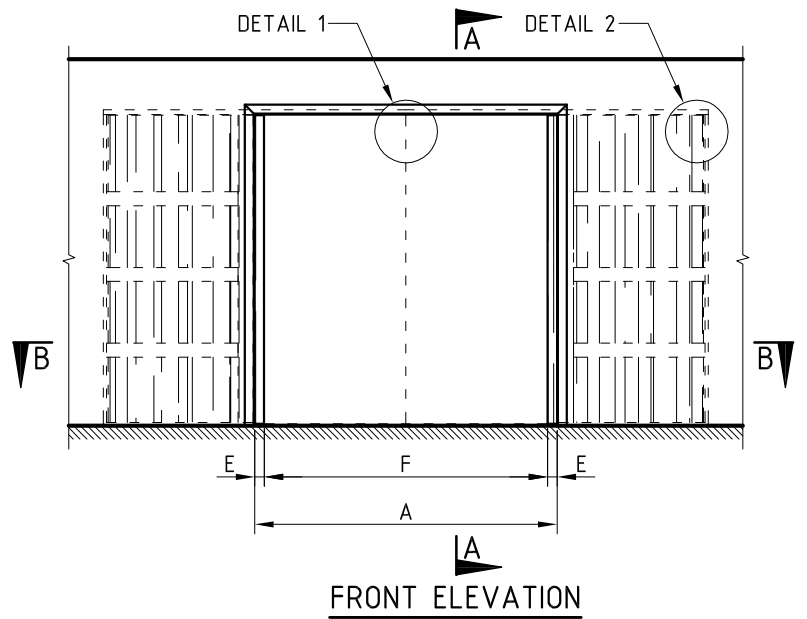


BI-PARTING CAVITY SLIDER - READY TO LINE TYPE T50

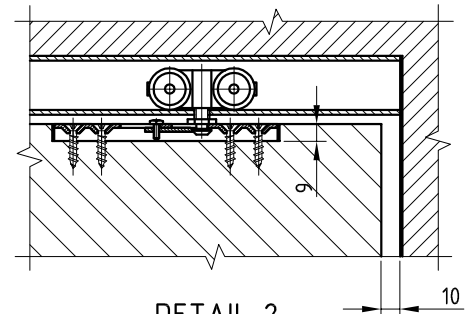
FOR TIMBER DOOR



SECTION A - A



DETAIL 1

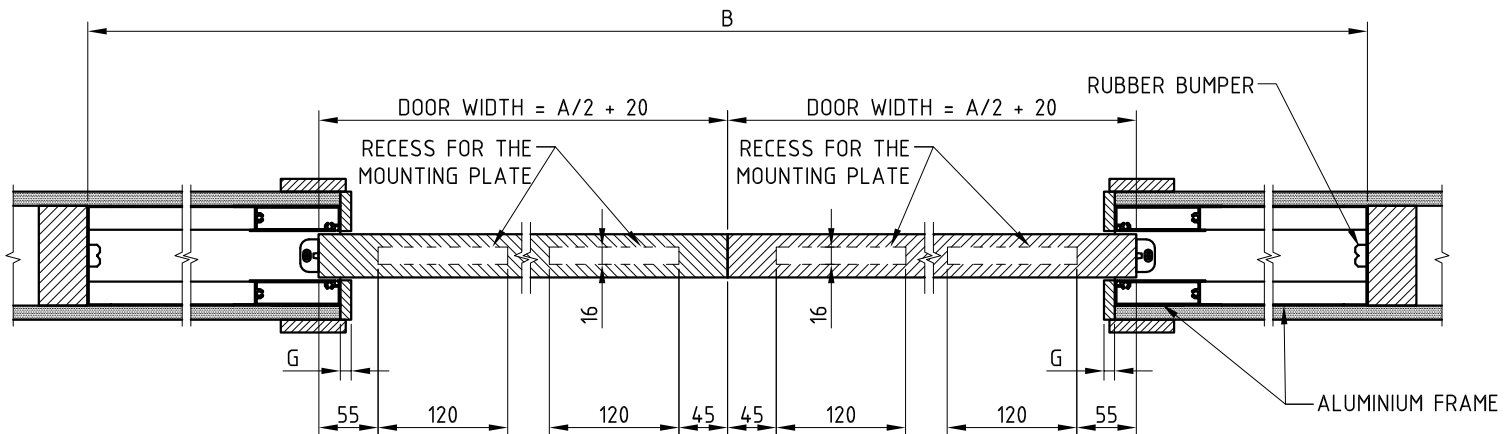


DETAIL 2

- A - OPENING FRAME WIDTH.
- B - OVERALL FRAME SIZE.
- C - DISTANCE FROM FINISHED FLOOR TO UNDERSIDE OF TRACK.
- D - DISTANCE FROM FINISHED FLOOR TO UNDERSIDE OF SUPPORT BEAM.
- E - PROJECTION OF DOOR FROM CAVITY.
- F - CLEAR OPENING WIDTH.
- G - REVEAL THICKNESS.

NOTES:

1. DOOR THICKNESS 40mm.
2. MAX. DOOR WEIGHT - 100kg.
3. ARCHITRAVE - BY OTHERS.
4. REVEAL THICKNESS 'G' TO BE DETERMINED BY CUSTOMER



SECTION B - B