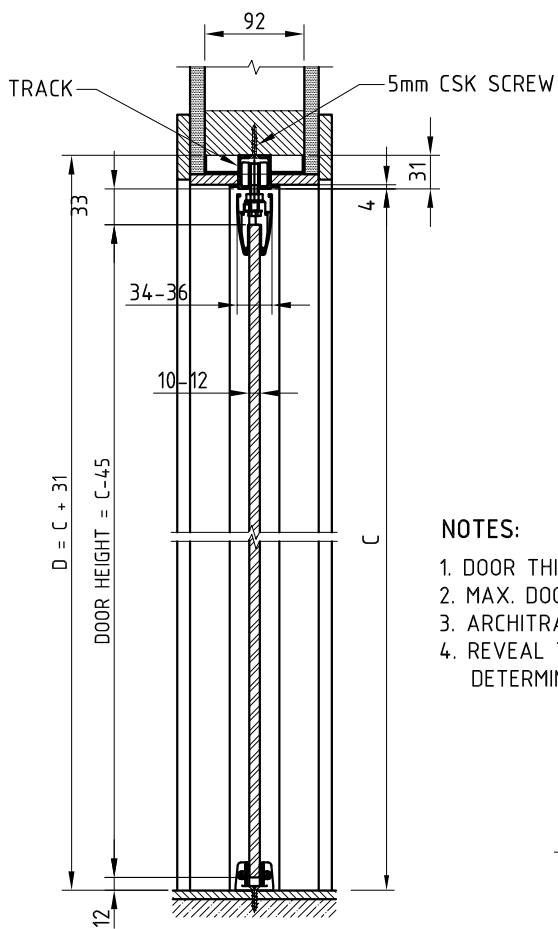
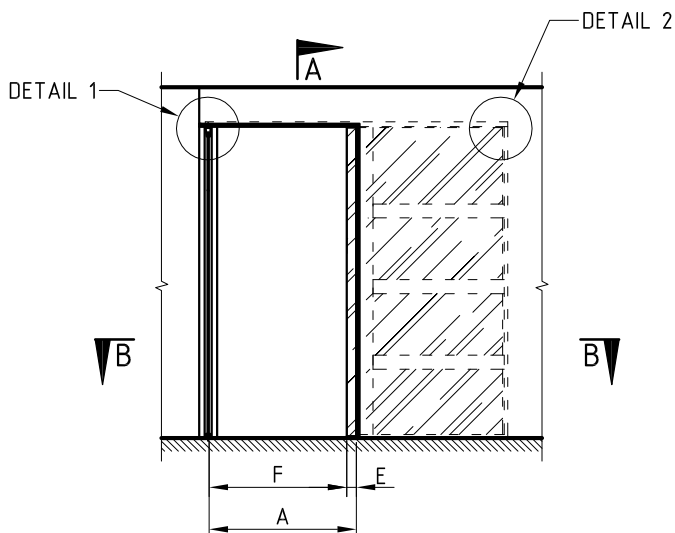


90° BI-PARTING CAVITY SLIDER - READY TO LINE TYPE G80 FOR GLASS DOOR

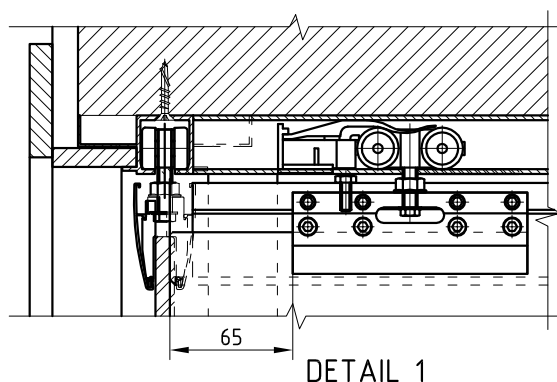


SECTION A - A

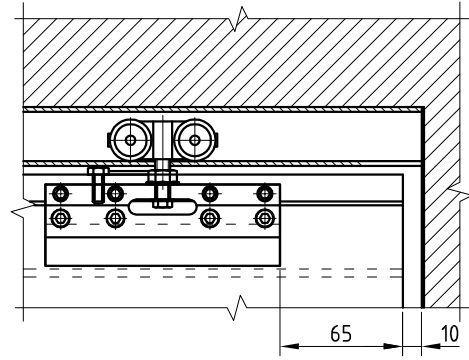


FRONT ELEVATION

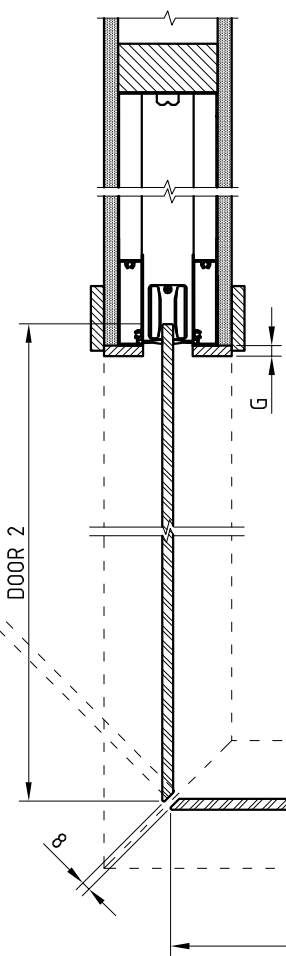
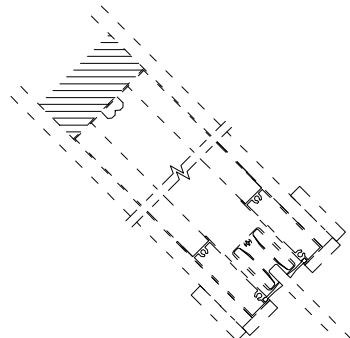
- NOTES:
1. DOOR THICKNESS 10-12mm.
 2. MAX. DOOR WEIGHT - 100kg.
 3. ARCHITRAVE - BY OTHERS.
 4. REVEAL THICKNESS 'G' TO BE DETERMINED BY CUSTOMER



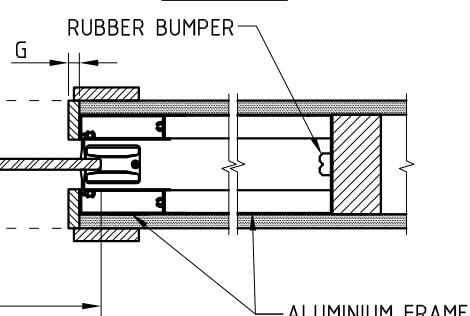
DETAIL 1



DETAIL 2



SECTION B - B



- A - OPENING FRAME WIDTH.
 C - DISTANCE FROM FINISHED FLOOR TO UNDERSIDE OF TRACK.
 D - DISTANCE FROM FINISHED FLOOR TO UNDERSIDE OF SUPPORT BEAM.
 E - PROJECTION OF DOOR FROM CAVITY.
 F - CLEAR OPENING WIDTH.
 G - REVEAL THICKNESS.