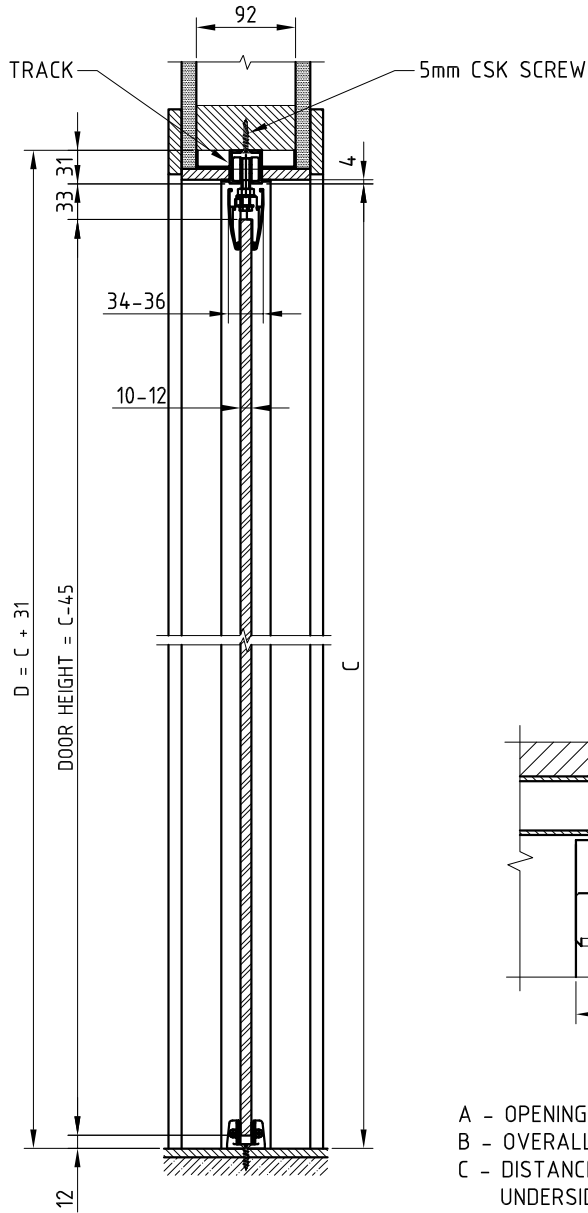
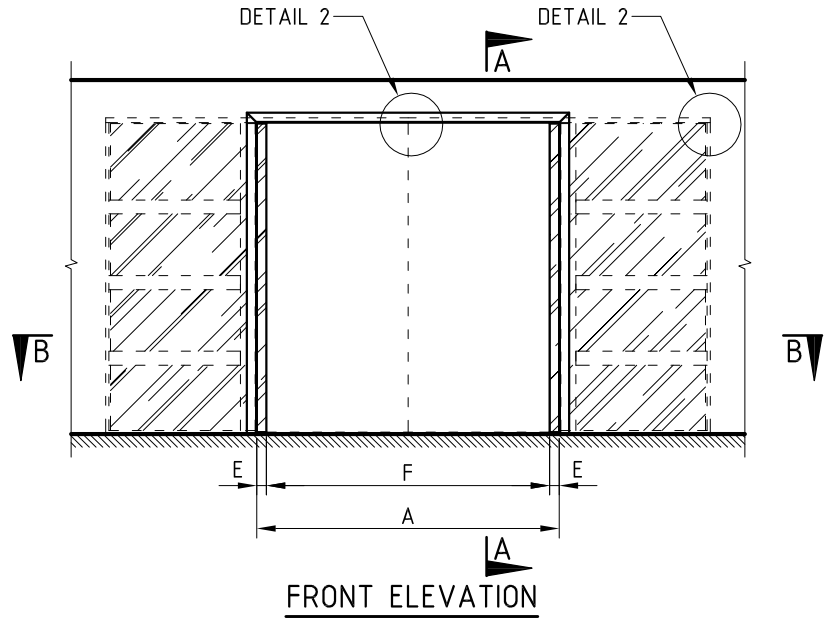


BI-PARTING CAVITY SLIDER - READY TO LINE TYPE G50

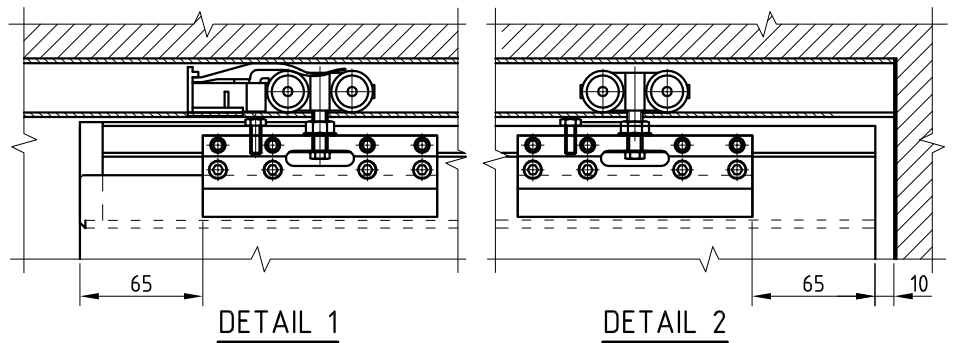
FOR GLASS DOOR



SECTION A - A



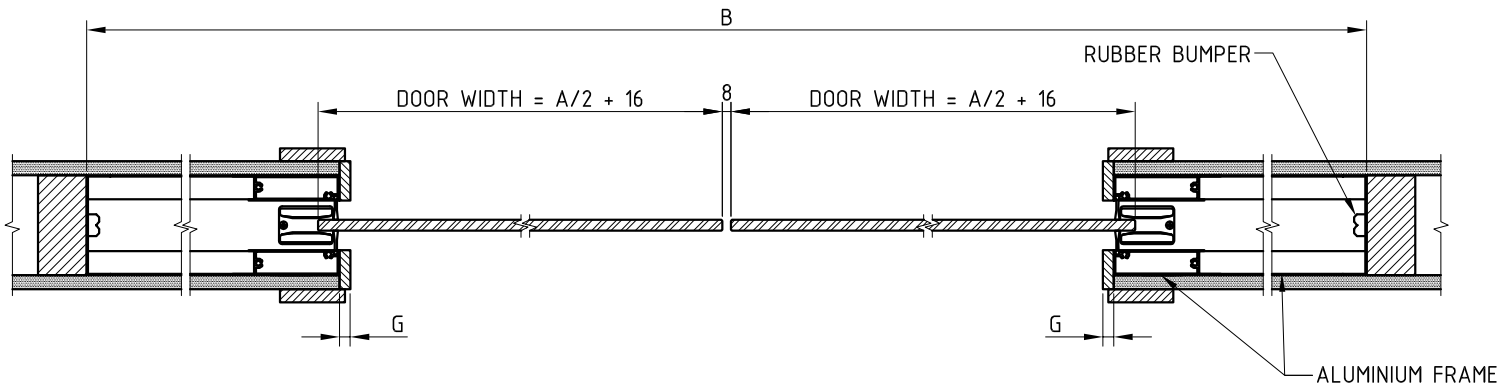
FRONT ELEVATION



DETAIL 1

DETAIL 2

- NOTES:**
1. DOOR THICKNESS 10-12mm.
 2. MAX. DOOR WEIGHT - 100kg.
 3. ARCHITRAVE - BY OTHERS.
 4. REVEAL THICKNESS 'G' TO BE DETERMINED BY CUSTOMER
- A - OPENING FRAME WIDTH.
 B - OVERALL FRAME SIZE.
 C - DISTANCE FROM FINISHED FLOOR TO UNDERSIDE OF TRACK.
 D - DISTANCE FROM FINISHED FLOOR TO UNDERSIDE OF SUPPORT BEAM.
 E - PROJECTION OF DOOR FROM CAVITY.
 F - CLEAR OPENING WIDTH.
 G - REVEAL THICKNESS.



SECTION B - B